

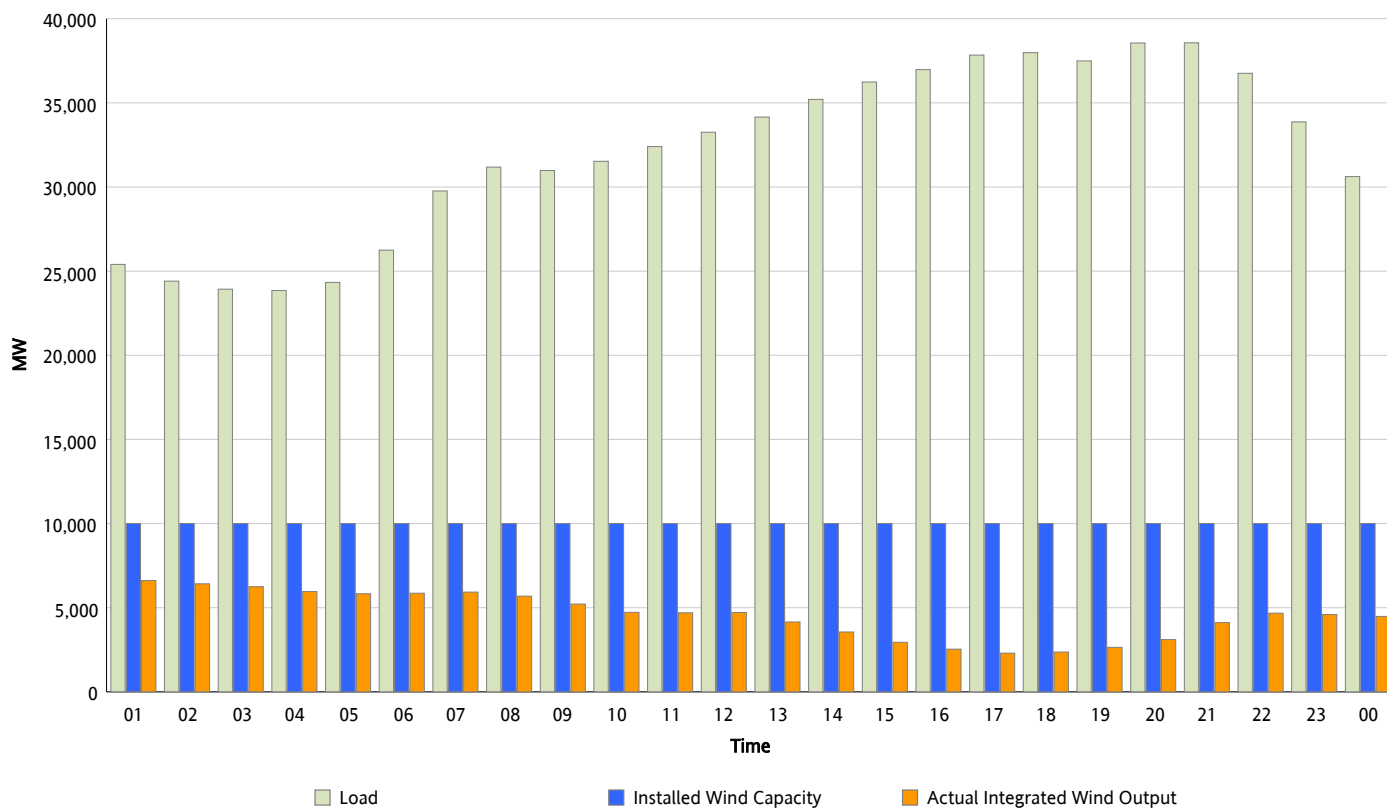


ERCOT Grid Operations

Wind Integration Report : 10/09/2012

Peak Load	38,563 MW
Load Peak Hour (HE)	21
Wind Over Peak	4,115 MW
Wind Record 06/19/12	8,368 MW
Max Wind Value*	6,760 MW
Wind Peak Time	00:19
Wind Integration %	26.41 %

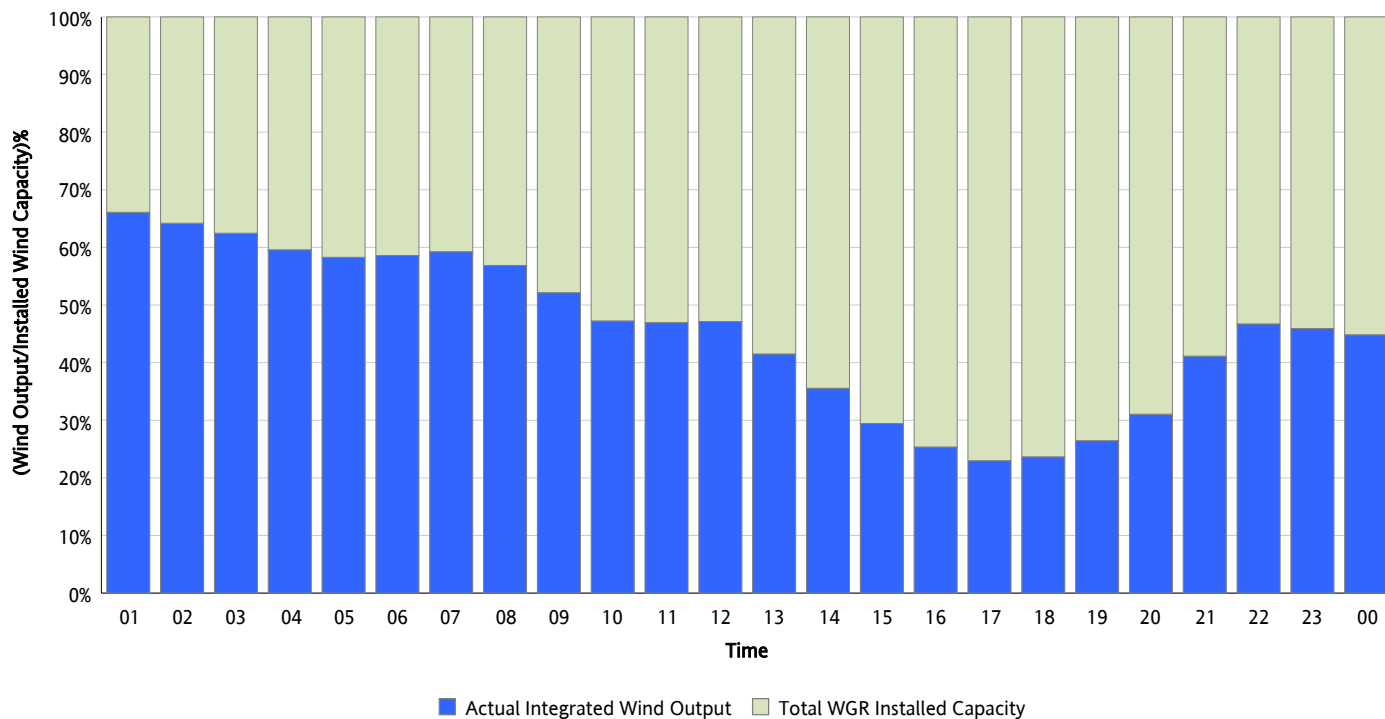
Hourly Average Actual Load vs. Actual Wind Output
10/09/2012



** Wind Record and Wind Max represent instantaneous values and the rest of the values are integrated over the hour*

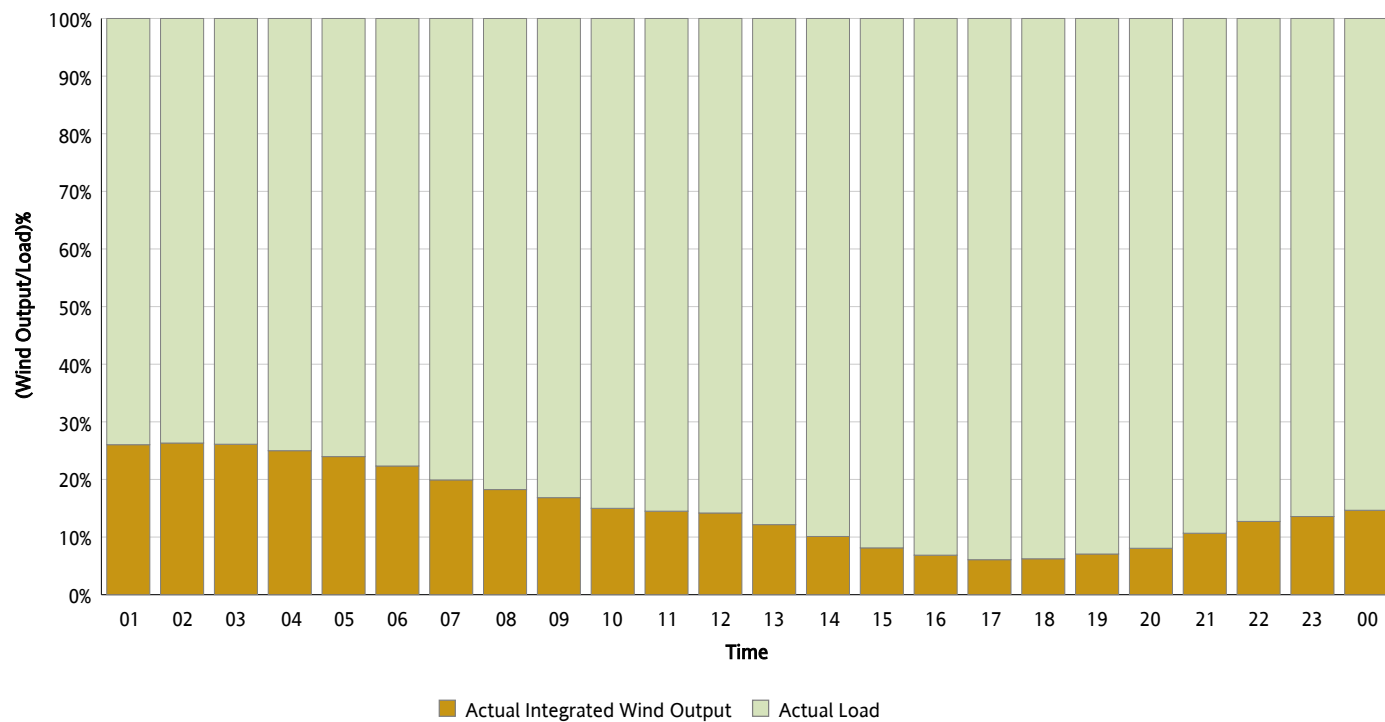
Actual Wind Output as a Percentage of the Total Installed Wind Capacity

10/09/2012



Actual Wind Output as a Percentage of the ERCOT Load

10/09/2012



ERCOT Load vs. Actual Wind Output

10/02/2012 - 10/09/2012

